

## Site Base Preparation:

Mark off the area where you are installing Pup-Grass®. Use marking spray paint or chalk. Once you have determined the area, remove existing sod and all organic materials. Remove 1.5"- 2" of soil. Create a slight grade for optimal drainage and rough level with a rake. We recommend leaving a few sprinkler heads in place. This will make cleaning Pup-Grass more efficient. On hot days, turn the sprinklers on for 3 minutes. This will cool the surface for your dog's pads. Cap off any remaining sprinkler heads. Lay 1 - 1 ½ inches of base material (AKA Class II Road Base, CR#6 or GAB) Spread it over the area. Before you begin to compact the soil, make for sure the native soil is dry.



## Neutralizing Clay Soil

If site has clay soil, we recommend adding lime as a soil stabilizer. Mix one 40 lb bag of lime per 200 sq ft mix in 3-4" depth. This will neutralize clay soil and allow for better drainage and a stronger base.



## Compacting the Area

The compaction process will remove voids and air pockets and will provide a firm base that will not expand or contract during wet and dry seasonal changes. For best compaction, wet base material slightly. Use a drum roller or vibrating plate compactor, compact to 90%.



## Smoothing Out Compacted Area

After base material is compacted, smooth out using concrete sand or ASTM C33. This material fills small voids and provides a flat smooth surface for your installation. Use 1" or enough material to cover the base. Do a final compaction of the topping material. For small areas use a tamper and for larger areas use a vibratory compactor, tamper or barrel roller, however we recommend a motorized compactor.

***Stone Dust or Decomposed Granite is not a good alternative for use as a topping. Decomposed Granite unless mixed with a stabilizer will wash away. Stone Dust does not have good drainage capabilities.***

## Weed Barrier

After the area is compact and level, place a quality weed barrier fabric over the area to prevent any vegetation growing under Pup-Grass®. Cut opening for sprinkler heads if needed.

## Installing Pup-Grass®

Un-roll the grass and let it warm in the sun. This will make stretching and installing Pup-Grass® easier, so it lays flat. Cut it to fit the area.

Installing synthetic grass is the same procedure as installing carpet. Stretch the material so that it lies perfectly flat using the turf nails as you stretch the material. Make sure that the Pup-Grass is not puckered and lays perfectly flat. Use turf nails approximately 18"-24" on center and approximately 36" on center in the middle. When nailing, spread the grass blades so the nail head clears the blades.

*It is critical that the nap of the grass goes in the same direction. To determine which direction the nap is, look at the vertical lines on the backing. All cuts should be going in the same direction.*

## Seaming Joints

Joints can be secured by two methods, seaming tape or nails. Make sure each edge is straight. When using tape and adhesive roll back Pup-Grass on each side. Place seaming tape in middle of two sections. Apply adhesive with a trowel or an adhesive caulking gun. Spread adhesive evenly on both sides.

*Make sure you do not use too much adhesive or it will come up through the seam.*

**Boarders:** Are not a requirement however, it will provide a more finished look to your installation.

## WonderEdge System

Is designed for easy and quick Installation. No trenching or digging required. Complete your border installation in a tenth of the time it takes with traditional bender board  
No stakes to screw - simply use your nail spikes to fasten to top of prepared base. Can be glued or nailed to concrete or asphalt. It forms an ultra-strong border for pet turf installs.

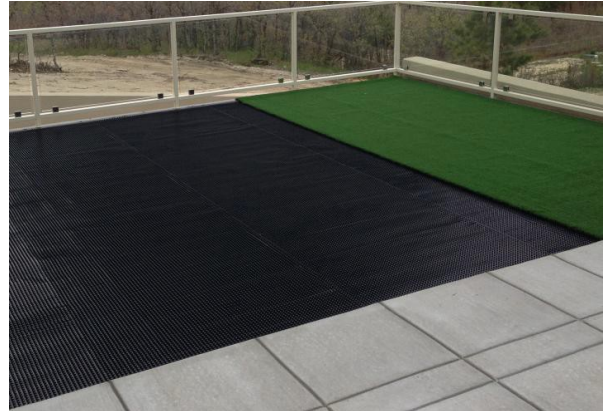




## Installing Over Concrete, Tile or Limestone.

### Preparing the Surface

When installing Pup-Grass® over a hard surface, it is recommended that Pup-Drain™ Mat be installed between the surface and Pup-Grass. This will raise the Pup-Grass® enough to allow liquids to drain away from the grass and also provides protection for the grass backing rubbing on hard surfaces. Asphalt surfaces must have a drainage mat to protect the backing from oils and chemicals emitted naturally.



### Securing Pup-Grass®

Layout the area making sure the corners are square. Place Wonder Edge boards use concrete nails or epoxy glue so secure the Wonder Edge.

*Do not glue Pup-Grass to concrete or asphalt. This will prevent the grass from draining properly.*

### Infill

We recommend using **Pup-Fresh™** Infill and Odor Control. It is an all natural, odorless, non-toxic mineral that neutralizes urine and help keep Pup-Grass looking new. It will also help reduce surface temperature. It is and all natural product that is safer for dogs and the environment than ground rubber or silica sand. You can apply **Pup-Fresh™** evenly with a fertilizer spreader or hand broadcast it. Use a push broom to fill in after each pass of **Pup-Fresh™** this fluffs your Pup-Grass® blades. Brooming after each pass of the **Pup-Fresh™** allows the infill material to migrate between the blades. This will provide support for the blades and is a natural, non- toxic odor control. The last step is to hose the area, to remove infill dust.



### Base Materials Needed:

- Base Rock
- Concrete Sand
- Weed Barrier
- Turf Nails or Seaming Tape
- Adhesive

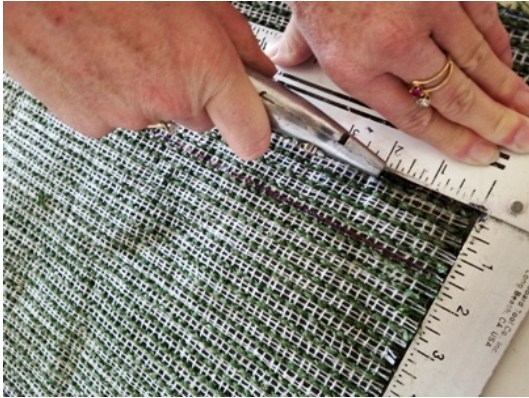
### Tools Needed:

- Shovels
- Landscaping Rake
- Wheel Barrow
- Compactor
- Fertilizer spreader
- Hose
- Push broom
- Utility knife
- Measuring tape
- Straight edge
- Chalk line

## Tool and Cutting Guide

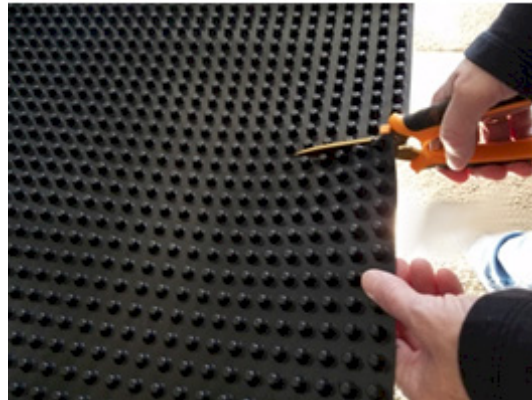
### Cutting Pup-Grass®

Measure and mark area. Use a straight edge as a guide. Always cut between the green lines to avoid excess shedding of the edges.



### Cutting Pup-Drain™

Measure and mark. Use heavy duty scissors or shears and cut between raised bumps which will act as a guide and allows for a fairly straight cut.



**Carpet Knife**



**Straight Edge**



**Cutting Snips**



**Chalk Line**

